

# USB Guitar Link Cable

## User Manual

(Guides on how to proceed [with ASIO Driver.](#))

### 1. Preface

Dear Customer,

On behalf of our company, We want to extend our thankness to you for choosing this USB Guitar Link Cable. This product is designed for Guitar lovers. Guitar is a source of happiness. We wish easy-to-operate tool will be the bridge that leads you to this source of happiness. And here, we sincerely hope your talents & creativity be fulfilled in this field..

This booklet will show you how to use this product. For the purpose of receiving better service, please read this Manual before using this product.

Thank you !

### 2. Introduction:



USB Guitar Link Cable is a professional tool that enables you to turn your PC or Mac computer into fantastic working platform on which you can use the classic effects, in the studio as well as on stage. It allows you to record, play along to a playback, or play directly over the modeling amps and effects. With a NOTEBOOK, a guitar and USB Guitar Link Cable, it is possible to work indoors or outdoors, be it train or hotel. This portable Cable will be become the best choice for guitar lovers, especially for those who are on the go.

## Key Features:

- \*Easy Plug and Play Installation
- \*USB bus powered--Requires no external power
- \*Stereo Headphone output lets you jam with your computer and can also be used for monitoring with active monitor speakers
- \*Plug in your favorite guitar and turn your PC or Mac computer into a guitar amp and recording system without the need for any other hardware
- \*High-quality components and exceptionally rugged construction ensure long life
- \*Variable-speed file playback function for MP3, WAV, AIFF audio files—perfect for easy learning and practicing

## System Requirements:

MacOS 8.5, 8.6, 9.x, OS X ,  
Windows XP SP2, Windows Vista

## Package Contents:

USB Guitar Link Cable x 1  
CD x 1 (Manual, Driver)

## Specifications

### GUITAR IN

Connector	¼" TRS
Input Impedance (High)	250 kΩ
Input Impedance (Low)	400 kΩ

### PHONES OUT

Connector	1/8" TRS stereo jack
Output impedance	approx. 50 Ω
Max. output pegel	-2 dBu, 2 x 3.7 mW @ 100 Ω

### USB 1.1

Connector	type A
-----------	--------

### DIGITAL PROCESSING

Converter	16-bit converter
Sample rate	32.0 / 44.1 / 48 kHz

### POWER SUPPLY

USB connection	5 V <sub>DC</sub> , 100 mA max.
----------------	---------------------------------

### DIMENSIONS/WEIGHT

Dimensions (H x W x D)	24.6 mm x 95.6 mm x 50.8 mm 0.97" x 3.75" x 2.00"
Cable length	150 mm
Weight	0.092 kg

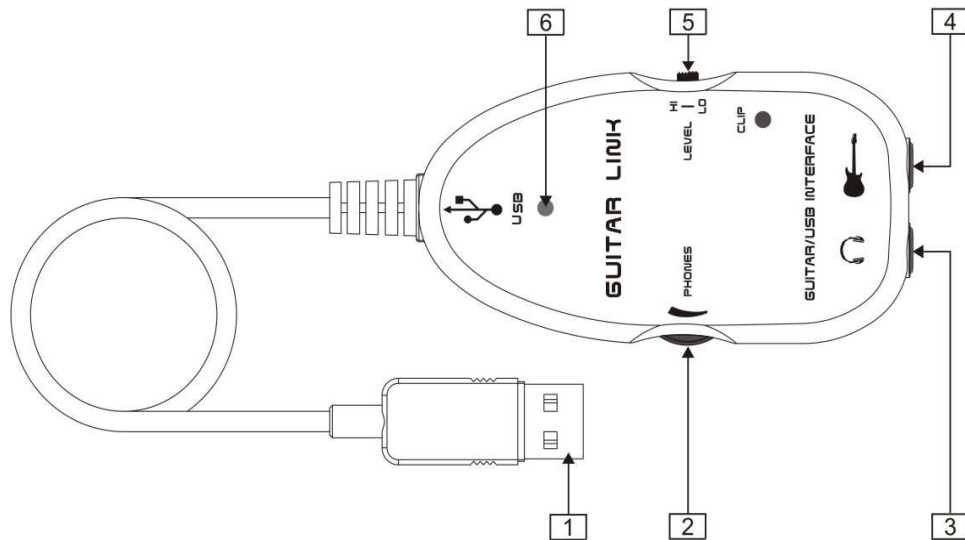
### SYSTEM REQUIREMENTS (PC / MAC)

Windows XP, Pentium 700 MHz or Athlon XP 1.33 GHz,  
256 MB RAM

Mac OS X v10.3.x, G4 733 MHz, 512 MB RAM

***Note:** Product specifications and product technical information contained in this User Guide are subject to change without prior notice*

## Controls and Connections



- 1 USB Interface . 🖱️ Blue LED indicates the connection to a computer has been established.
- 2 Voice Controller. 🖱️ Please set suitable volume to avoid damage to your hearing and headphone or loudspeakers. .
- 3 You can use a commercially available 1/4" jack for the 🎧-Connection.
- 4 You can connect the USB Guitar Link Cable to your guitar via the guitar input (1/4" jack). Use a commercial 1/4" mono jack cable.
- 5 You can modify the guitar signal with the LEVEL switch. At high signal levels, the CLIP LED will light up red in which case you should set the switch to low.
- 6 The blue LED indicates the connection to a computer has been established.

## 3. Operating Procedure

It's as simple as the following three major steps:

**Step 1** Install ASIO Driver

**Step 2** Install and Execute Guitar Rig 2

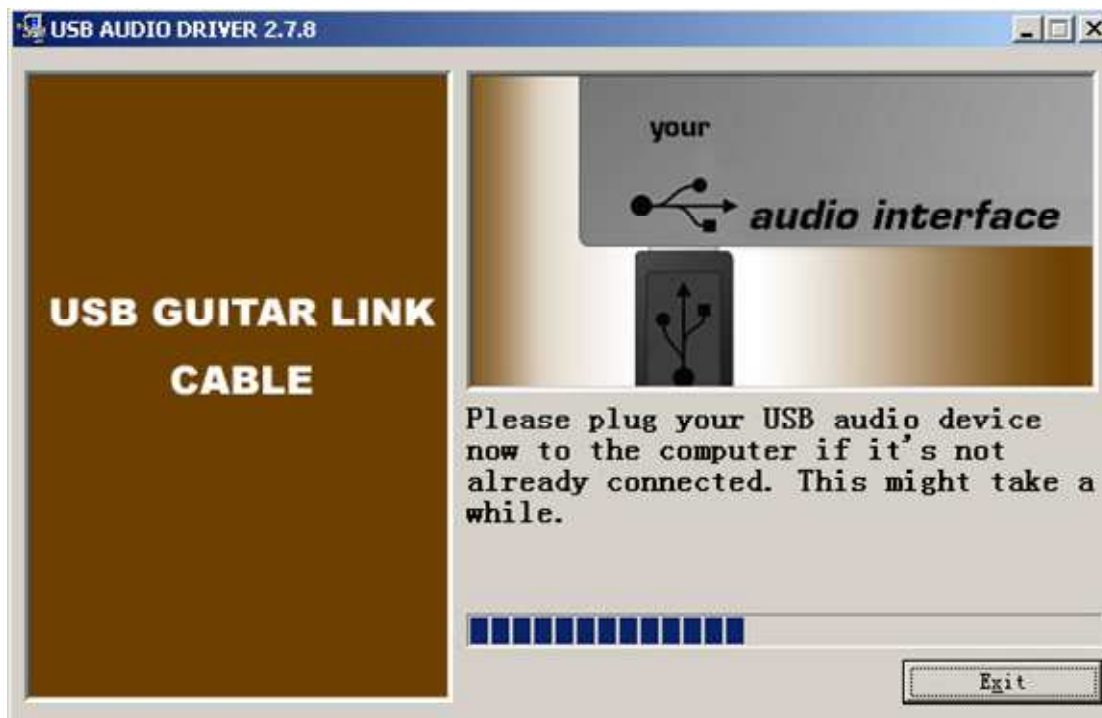
**Step 3** Play

### 1)How to Install ASIO Driver?

**NOTE:** Please don't plug USB Guitar Link Cable to your computer before instruction is given.

**Step 1:** Find and Execute "**Setup.exe** " from the CD Driver

**Step 2.** Plug USB Guitar Link Cable to your computer when it comes to:



After you plug the USB Guitar Link Cable to PC, Please wait because it might take a while to finish

**Step 3.** Click “Exit” to finish

## 2) How to Execute Guitar Rig 2 ?

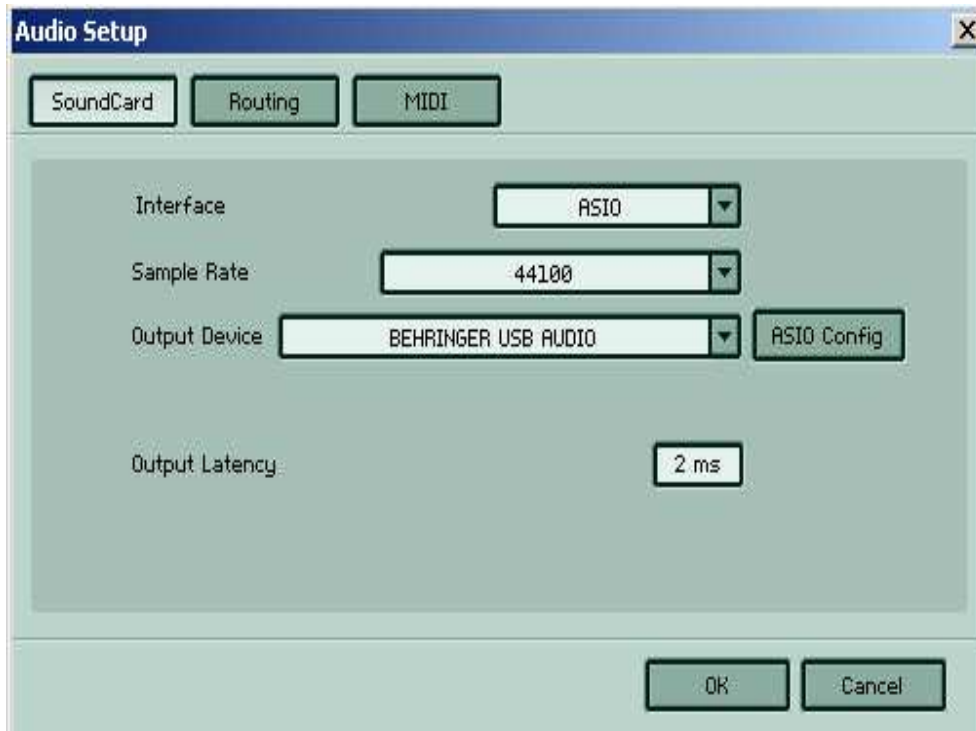
**NOTE:** Before Executing Guitar Rig 2, please make sure that **ASIO Driver** is installed and USB Guitar Link Cable is already plugged to computer via USB interface.

**Step 1** Execute the Guitar Editorial Software-**Guitar Rig 2**

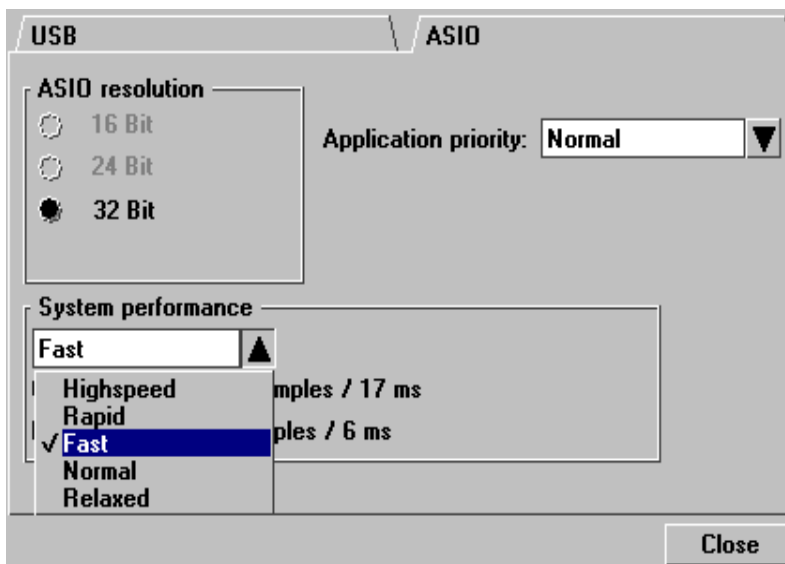
**Step 2** Click “file”(on the Top Left),and then choose “Audio+MIDI Settings ”



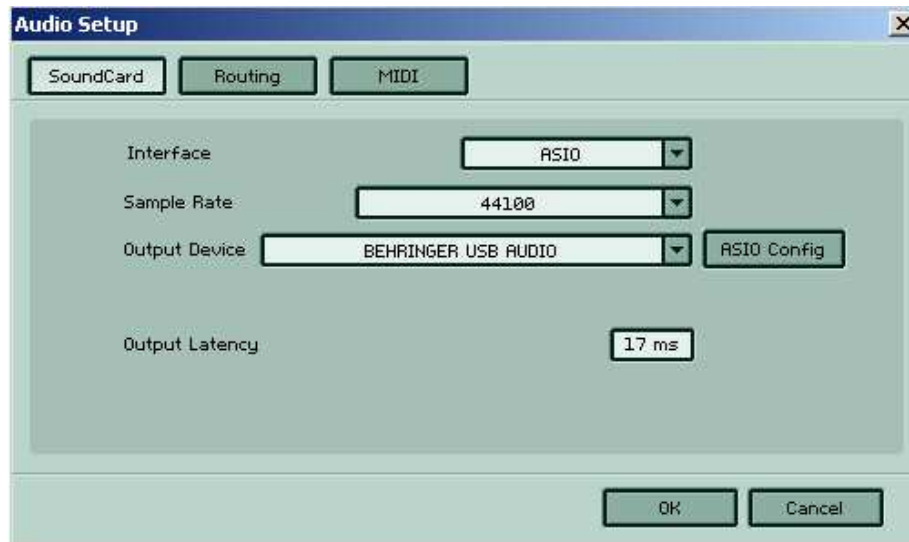
**Step 3** Click “**SoundCard**” and set all items **the same as follows**.Then click“**ASIO Config**”  
(Please don’t Click “**ok**” in this step)



**Step 4.** Please Click“**ASIO**”, Choose “**Fast**” in the **System performance**, and then click “**Close**”







**Step 5.** Please click “**ok**” to finish



### 3) Short Introduction of Major Buttons



- 1).  Click these two buttons, one recorder or two will be chosen.
- 2).  "Build a new file, Open, Save" respectively
- 3).  represent "Play, Stop, Repeat, Record" respectively
- 4).  "LOOP IN" starts clipping audio file, "LOOP OUT" ends. The clipped section will be played repeatedly.



- 5). This TAPEDECK ONE is recorder & player. if you choose “at input”, you will hear the music with sound effects you set. You can do post processing to your recording via choosing it. If you choose “at output”, the sound you hear is the original sound. You can insert accompany when playing the guitar, so that guitar music and accompany will be recorded together.



- 6). This TAPEDECK TWO is a sync recorder & player. You can set “on” or ”off” to share this function or not

**Note:** This software enables you set various sound effects. User Manual only gives you a general knowledge of this Guitar Editorial Software. More operation is required to be a master of it.

#### 4.APPENDIX-- Operation of the Connector



Connect this *USB Guitar Link Cable* to your computer, the LED lights up blue indicates successful connection. If you'd not like headphone, you can connect a pair of active monitors to the PHONES Connector on the USB Guitar Link Cable.