

USB 2.0

GIGABIT ETNERENET ADAPTER
10/100/1000 Mbps

MANUAL

VER 1. 21

REV.2.0S

Introduction

This Gigabit USB 2.0 Ethernet adapter is a cost effective solution that converts a USB port into a 10/100/1000Base-T Ethernet port. It enables low cost and affordable Gigabit Ethernet network connection to desktop, notebook PC, and embedded system using popular USB ports. No need to purchase an expensive Gigabit network interface card and to spare a PCI or Cardbus slot, just using your existing USB ports and you can upgrade your network connection speed.

Features

- Supports 10/100/1000 Mbps auto-sensing capability
- Supports Auto MDIX (straight and cross network cable auto-detection)
- USB specification 1.0, 1.1 and 2.0 compliant
- Supports USB full and high speed modes with bus power capability
- IEEE 802.3, 802.3u, and 802.3ab (10Base-T, 100Base-TX, and 1000Base-T) compatible
- Supports both full-duplex and half-duplex operation in Fast Ethernet
- Supports Jumbo packet of up to 9KB
- Supports suspend mode and remote wakeup via link-up and magic packet

Package Contents

Before installation, please check the items of the package.

- Gigabit USB 2.0 Ethernet Adapter x 1
- Driver CD x 1
- Quick Installation Guide x 1

System Requirements

- Windows 2000 , XP, Vista, Windows 7,
- Mac OS X v10.5x and v10.6x
- Linux 2.6 or above
- One available USB 2.0 port

Installing Drivers

Note: DO NOT connect the Ethernet adapter to your computer before completing the driver installation.

1. Insert the provided CD into your disc drive. Locate and double-click the **Setup.exe** file in the Driver folder to launch the setup program.



2. Wait for the program to install the drivers.

3. When done Click **Finish** to complete the installation.



Note: Actual strings depend on your operation system. These screen shots are from Windows 7 64-bit and might vary slightly for each operation system.

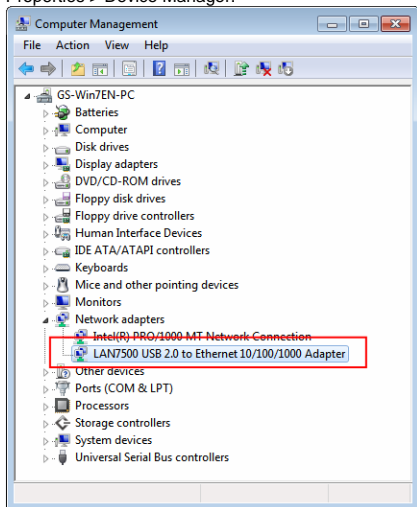
4. Connect the Ethernet adapter's USB end to a free USB port of your computer. At this stage, different situations may occur according to your operation system.

5. Follow the instructions below to complete the installation. Then you can use the USB 2.0 Ethernet Adapter.

Verifying the Driver Installation

To verify your Ethernet adapter installation, please launch Device Manager by the steps below:

On Windows: Right-click the Computer icon on the desktop and select Properties > Device Manager.



In the **Network adapters** group, a string similar to **USB2.0 to Gigabit Ethernet 10/100/1000 Adapter** should be displayed.

If there is a question or exclamation mark next to that item, then the driver is not properly installed. Please delete the item, unplug the adapter and repeat the installation steps.

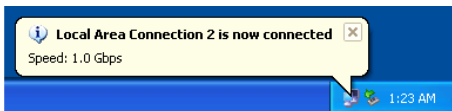
Connecting to a Network

Now you can connect your network device, e.g, switch, router, DSL/Cable modem, to the adapter's LAN port via an Ethernet cable.

Notes on Ethernet Cables

- Sometimes a so-call crossover Ethernet cable is required for connection to certain network equipments. As the adapter's LAN port supports Auto-MDIX feature, it eliminates the need to use crossover cables.
- When the Ethernet adapter is used in a Gigabit network, it's recommended that you use Category 6 Ethernet cable for higher transmission speed.

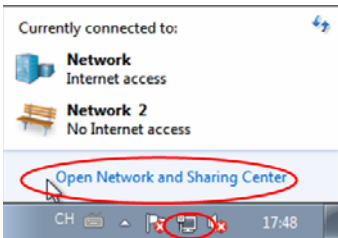
On Windows 2000/XP, upon your connection, a message pops up in the notification area indicating your connection speed.



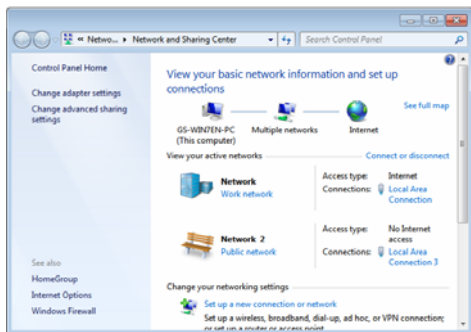
The adapter's Auto Sense feature can automatically detect the network's maximum line speed. To have a 1000Mbps connection, your network device (e.g., switch, router or DSL modem) must also support 1000Mbps.

On Windows Vista / Windows 7, you can view the connection speed by the steps below:

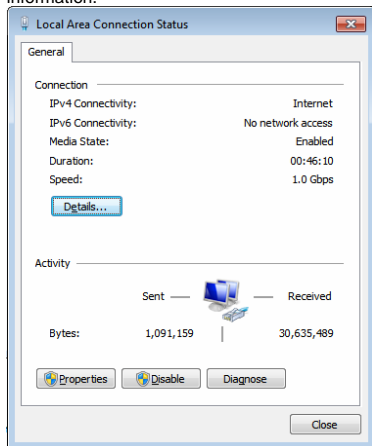
1. Right-click the network icon in the system tray and select "**Open Network and Sharing Center**".



2. Click View status for the connection of your Ethernet adapter.



3. Current connection speed will be displayed among the connection information.

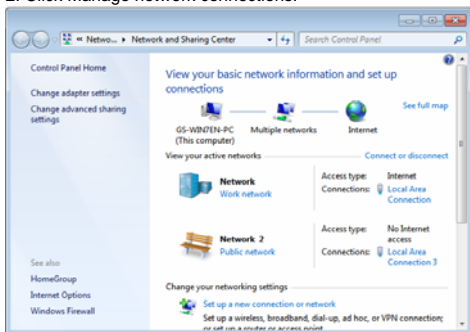


Configuring Network Settings

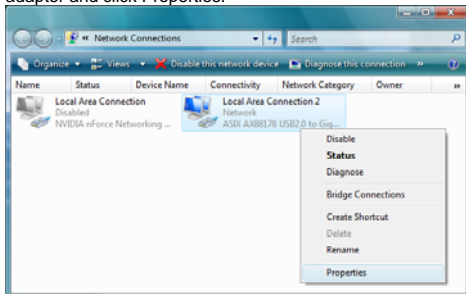
You should configure your Ethernet adapter as required according to your network environment. If you are unsure about the settings, consult with your network administrator for assistance. The following describes how to launch the network settings window for your Ethernet adapter.

To configure network settings for your Ethernet adapter on Windows:

1. Right-click the network icon in the system tray and select Network and Sharing Center.
2. Click Manage network connections.



3. Right-click the Local Area Connection icon indicating your network adapter and click Properties.



4. Then the Local Area Connection Properties window appears for user to make required settings.

